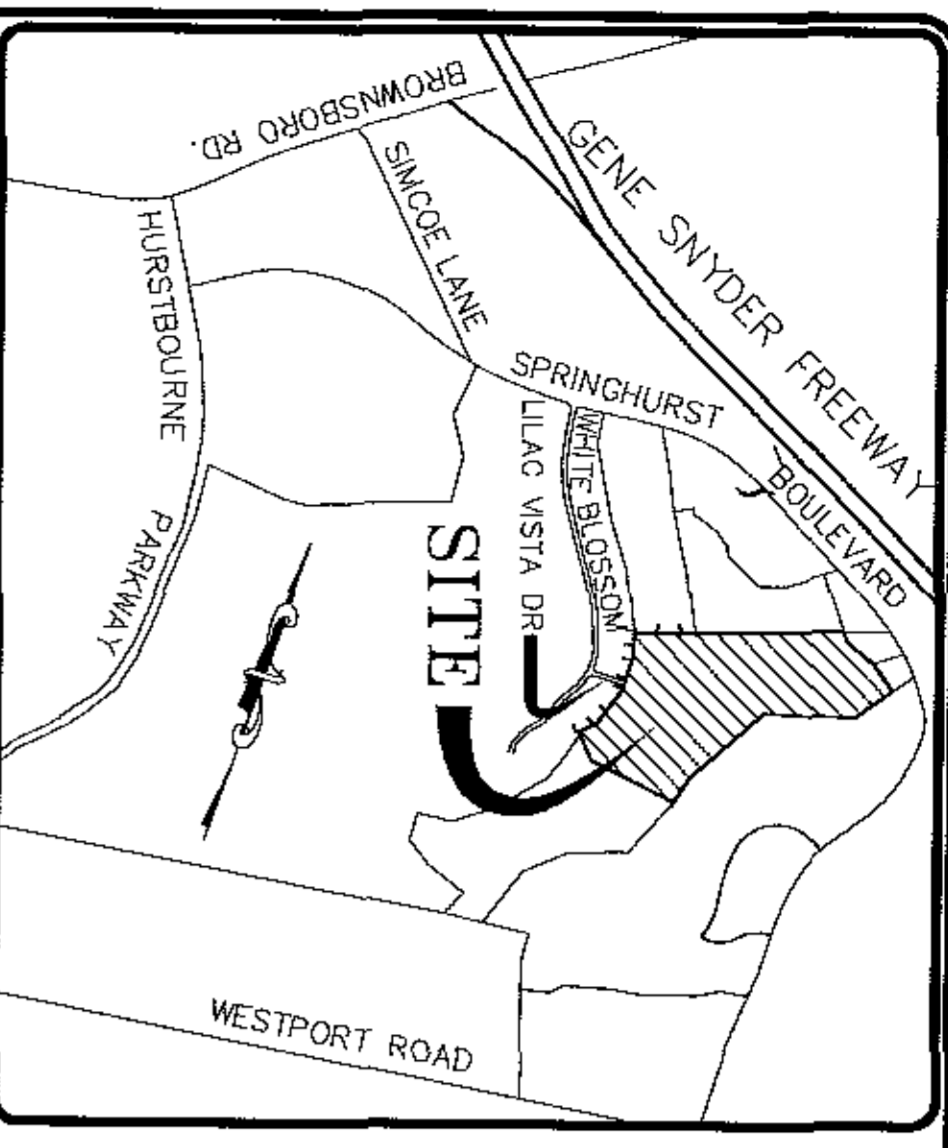
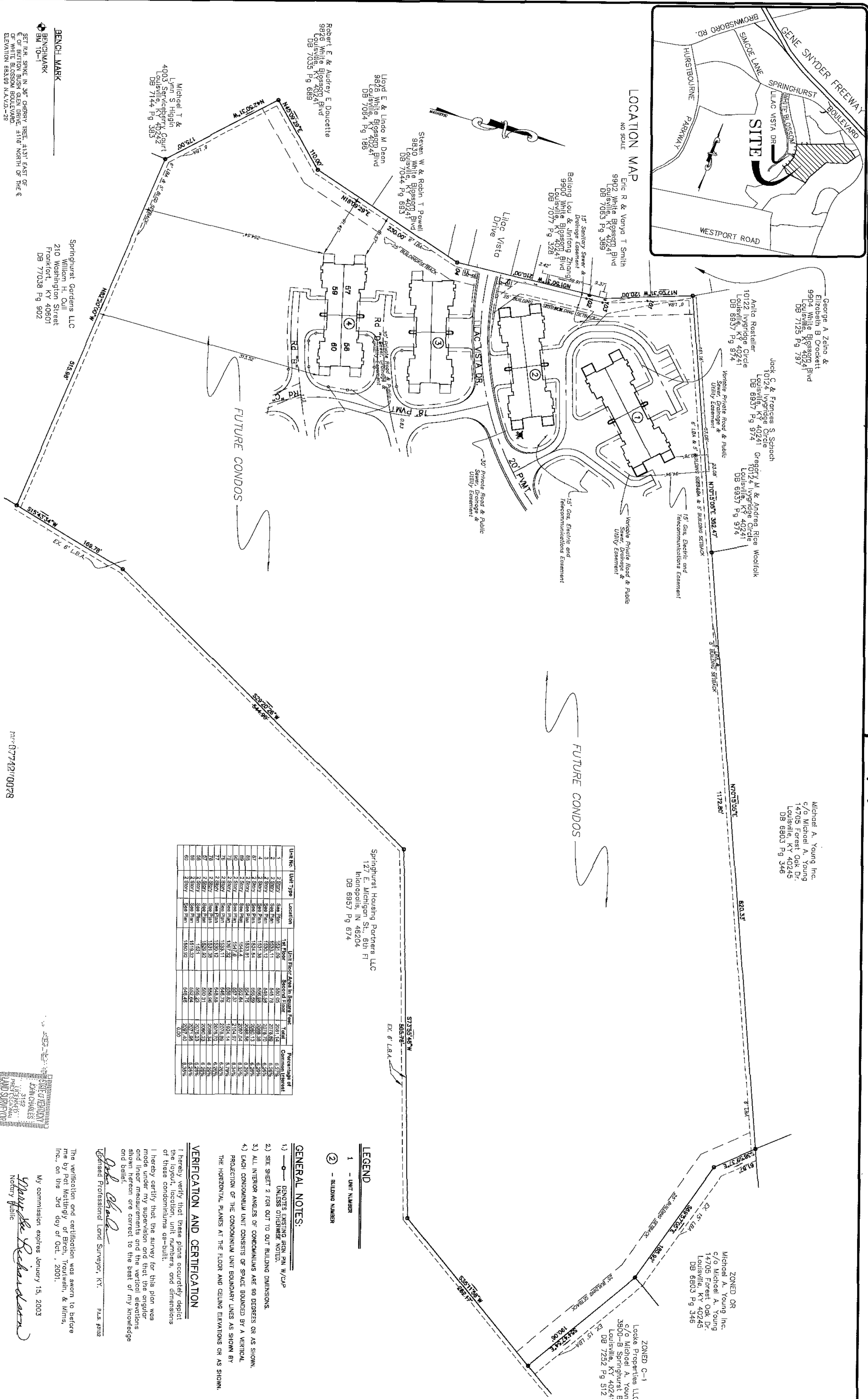


84 x 14



LOCATION MAP
NO SCALE



- BENCHMARK**
SET PER SPK IN 36" CHERRY TREE, 4131' EAST OF E OF WHITE BLOSSOM BOULEVARD
- BENCHMARK**
BM 10-1
- BENCHMARK**
SET PER SPK IN 36" CHERRY TREE, 4131' EAST OF E OF WHITE BLOSSOM BOULEVARD
- BENCHMARK**
BM 10-1
- BENCHMARK**
SET PER SPK IN 36" CHERRY TREE, 4131' EAST OF E OF WHITE BLOSSOM BOULEVARD
- BENCHMARK**
BM 10-1
- BENCHMARK**
SET PER SPK IN 36" CHERRY TREE, 4131' EAST OF E OF WHITE BLOSSOM BOULEVARD
- BENCHMARK**
BM 10-1

Springhurst Gardens LLC
210 Washington Street
Frankfort, KY 40601
DB 77038 Pg 902

Robert E. & Audrey E. Doucette
5828 White Blossom Blvd
Louisville, KY 40241
DB 7035 Pg 689

Lloyd E. & Linda M. Dean
5825 White Blossom Blvd
Louisville, KY 40241
DB 7034 Pg 689

Steven W. & Robin T. Powell
5830 White Blossom Blvd
Louisville, KY 40241
DB 7044 Pg 693

Balrong Lou & Jirong Zhang
5900 White Blossom Blvd
Louisville, KY 40241
DB 7077 Pg 328

Eric R. & Yanya T. Smith
5902 White Blossom Blvd
Louisville, KY 40241
DB 7083 Pg 389

George A. Zabo & Elizabeth B. Crockett
9904 White Blossom Blvd
Louisville, KY 40241
DB 7125 Pg 797

Jack C. & Frances S. Schroch
10124 Ivyridge Circle
Louisville, KY 40241
DB 6937 Pg 974

Antio Rosteller
10122 Ivyridge Circle
Louisville, KY 40241
DB 6937 Pg 974

Gregory M. & Andrea Rice Woodfolk
10124 Ivyridge Circle
Louisville, KY 40241
DB 6937 Pg 974

Michael A. Young Inc.
c/o Michael A. Young
14705 Forest Oak Dr.
Louisville, KY 40245
DB 6803 Pg 346

Michael A. Young Inc.
c/o Michael A. Young
14705 Forest Oak Dr.
Louisville, KY 40245
DB 6803 Pg 346

Unit No.	Unit Type	Location	Total Floor Area in Square Feet	Total Common Interest	Percentage of Common Interest
1	2 Story	57A Plan	1,533.11	4.43	6.25%
2	2 Story	57B Plan	1,533.11	4.43	6.25%
3	2 Story	57C Plan	1,533.11	4.43	6.25%
4	2 Story	57D Plan	1,533.11	4.43	6.25%
5	2 Story	57E Plan	1,533.11	4.43	6.25%
6	2 Story	57F Plan	1,533.11	4.43	6.25%
7	2 Story	57G Plan	1,533.11	4.43	6.25%
8	2 Story	57H Plan	1,533.11	4.43	6.25%
9	2 Story	57I Plan	1,533.11	4.43	6.25%
10	2 Story	57J Plan	1,533.11	4.43	6.25%
11	2 Story	57K Plan	1,533.11	4.43	6.25%
12	2 Story	57L Plan	1,533.11	4.43	6.25%
13	2 Story	57M Plan	1,533.11	4.43	6.25%
14	2 Story	57N Plan	1,533.11	4.43	6.25%
15	2 Story	57O Plan	1,533.11	4.43	6.25%
16	2 Story	57P Plan	1,533.11	4.43	6.25%
17	2 Story	57Q Plan	1,533.11	4.43	6.25%
18	2 Story	57R Plan	1,533.11	4.43	6.25%
19	2 Story	57S Plan	1,533.11	4.43	6.25%
20	2 Story	57T Plan	1,533.11	4.43	6.25%
21	2 Story	57U Plan	1,533.11	4.43	6.25%
22	2 Story	57V Plan	1,533.11	4.43	6.25%
23	2 Story	57W Plan	1,533.11	4.43	6.25%
24	2 Story	57X Plan	1,533.11	4.43	6.25%
25	2 Story	57Y Plan	1,533.11	4.43	6.25%
26	2 Story	57Z Plan	1,533.11	4.43	6.25%
27	2 Story	57AA Plan	1,533.11	4.43	6.25%
28	2 Story	57AB Plan	1,533.11	4.43	6.25%
29	2 Story	57AC Plan	1,533.11	4.43	6.25%
30	2 Story	57AD Plan	1,533.11	4.43	6.25%
31	2 Story	57AE Plan	1,533.11	4.43	6.25%
32	2 Story	57AF Plan	1,533.11	4.43	6.25%
33	2 Story	57AG Plan	1,533.11	4.43	6.25%
34	2 Story	57AH Plan	1,533.11	4.43	6.25%
35	2 Story	57AI Plan	1,533.11	4.43	6.25%
36	2 Story	57AJ Plan	1,533.11	4.43	6.25%
37	2 Story	57AK Plan	1,533.11	4.43	6.25%
38	2 Story	57AL Plan	1,533.11	4.43	6.25%
39	2 Story	57AM Plan	1,533.11	4.43	6.25%
40	2 Story	57AN Plan	1,533.11	4.43	6.25%
41	2 Story	57AO Plan	1,533.11	4.43	6.25%
42	2 Story	57AP Plan	1,533.11	4.43	6.25%
43	2 Story	57AQ Plan	1,533.11	4.43	6.25%
44	2 Story	57AR Plan	1,533.11	4.43	6.25%
45	2 Story	57AS Plan	1,533.11	4.43	6.25%
46	2 Story	57AT Plan	1,533.11	4.43	6.25%
47	2 Story	57AU Plan	1,533.11	4.43	6.25%
48	2 Story	57AV Plan	1,533.11	4.43	6.25%
49	2 Story	57AW Plan	1,533.11	4.43	6.25%
50	2 Story	57AX Plan	1,533.11	4.43	6.25%
51	2 Story	57AY Plan	1,533.11	4.43	6.25%
52	2 Story	57AZ Plan	1,533.11	4.43	6.25%
53	2 Story	57BA Plan	1,533.11	4.43	6.25%
54	2 Story	57BB Plan	1,533.11	4.43	6.25%
55	2 Story	57BC Plan	1,533.11	4.43	6.25%
56	2 Story	57BD Plan	1,533.11	4.43	6.25%
57	2 Story	57BE Plan	1,533.11	4.43	6.25%
58	2 Story	57BF Plan	1,533.11	4.43	6.25%
59	2 Story	57BG Plan	1,533.11	4.43	6.25%
60	2 Story	57BH Plan	1,533.11	4.43	6.25%

Springhurst Housing Partners, LLC
127 E. Michigan St., 8th Fl
Indianapolis, IN 46204
DB 6957 Pg 674

LEGEND

- 1 - UNIT NUMBER
- 2 - BUILDING NUMBER

GENERAL NOTES:

- 1) - DIMENSIONS SHOWN FROM W/CAP UNLESS OTHERWISE NOTED
- 2) SEE SHEET 2 FOR OUT TO OUT BUILDING DIMENSIONS.
- 3) ALL INTERIOR ANGLES OF CONDOMINIUMS ARE 90 DEGREES OR AS SHOWN.
- 4) EACH CONDOMINIUM UNIT CONSISTS OF SPACE BOUNDED BY A VERTICAL PROJECTION OF THE CONDOMINIUM UNIT BOUNDARY LINES AS SHOWN BY THE HORIZONTAL PLANES AT THE FLOOR AND CEILING ELEVATIONS OR AS SHOWN.

VERIFICATION AND CERTIFICATION

I hereby certify that these plans accurately depict the layout, location, unit numbers, and dimensions of these condominiums as-built.

I hereby certify that the survey for this plan was made by me or under my supervision and that the original and true copies of the survey and the original and true copies of the plan are in my possession and control and that the same are correct to the best of my knowledge and belief.

John Clark
Licensed Professional Land Surveyor, KY. PLS #322

The verification and certification was sworn to before me by Pat McElroy of Birch, Troutwein, & Mims, Inc., on the 3rd day of Oct., 2001.

My commission expires January 15, 2003
Matthew R. Richardson
Notary Public

SURVEYOR'S CERTIFICATE

BEARINGS AND DISTANCES SHOWN ON THIS PLAN WERE DERIVED FROM A KINDER TRIPLE BEARING TRIANGULATION SURVEY OF THE PROJECT AREA, AS SHOWN ON THE ATTACHED SURVEY MAP.

HEREBY CERTIFY THAT THESE CONDOMINIUM PLANS WERE PREPARED BY ME OR UNDER MY SUPERVISION AND THAT I AM A LICENSED LAND SURVEYOR IN THE STATE OF KENTUCKY. I HAVE BEEN ADVISED THAT THE INFORMATION SHOWN HEREON ARE TRUE AND CORRECT AND I HAVE MADE THE BEST OF MY KNOWLEDGE AND BELIEF AND THE IMPROVEMENTS SHOWN, IF ANY, WERE LOCATED AT THE TIME THE CONDOMINIUM PLANS WERE PREPARED.

THE REFERENCE BEARING USED ON THESE PLANS WAS DERIVED FROM AN ESTABLISHED BEARING ALONG THE SOUTH LINE AS SHOWN ON THE ABOVE MENTIONED ANKOR PLAN.

John Clark
DATE 10-03-01

REVISIONS			
NO.	DATE	DESCRIPTION	BY

BIRCH, TRAUTWEIN & MIMS, INCORPORATED
Consulting Engineers Landscape Architects Planners
3001 Taylor Springs Drive
Louisville, Kentucky 40220
(502)-459-8402 Phone
(502)-459-8427 Fax

DATE _____
SIGNATURE _____

DATE _____
SIGNATURE _____

CONDOMINIUM REGIME UNITS 57-60
FOR: **THE VILLAGE OF SPRINGMEADOWS CONDOMINIUMS**

OWNER & DEVELOPER: **MICHAEL A. YOUNG, INC.**
3801-B Springhurst Blvd
Louisville, Kentucky 40242
(502) 425-6346
DEED BOOK 6554 PAGE 335

PROPERTY ADDRESS: Springhurst Boulevard
Louisville, Kentucky 40241
TAX BLOCK 688+ LOT 335

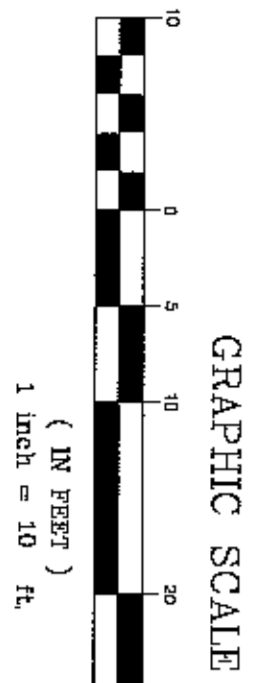
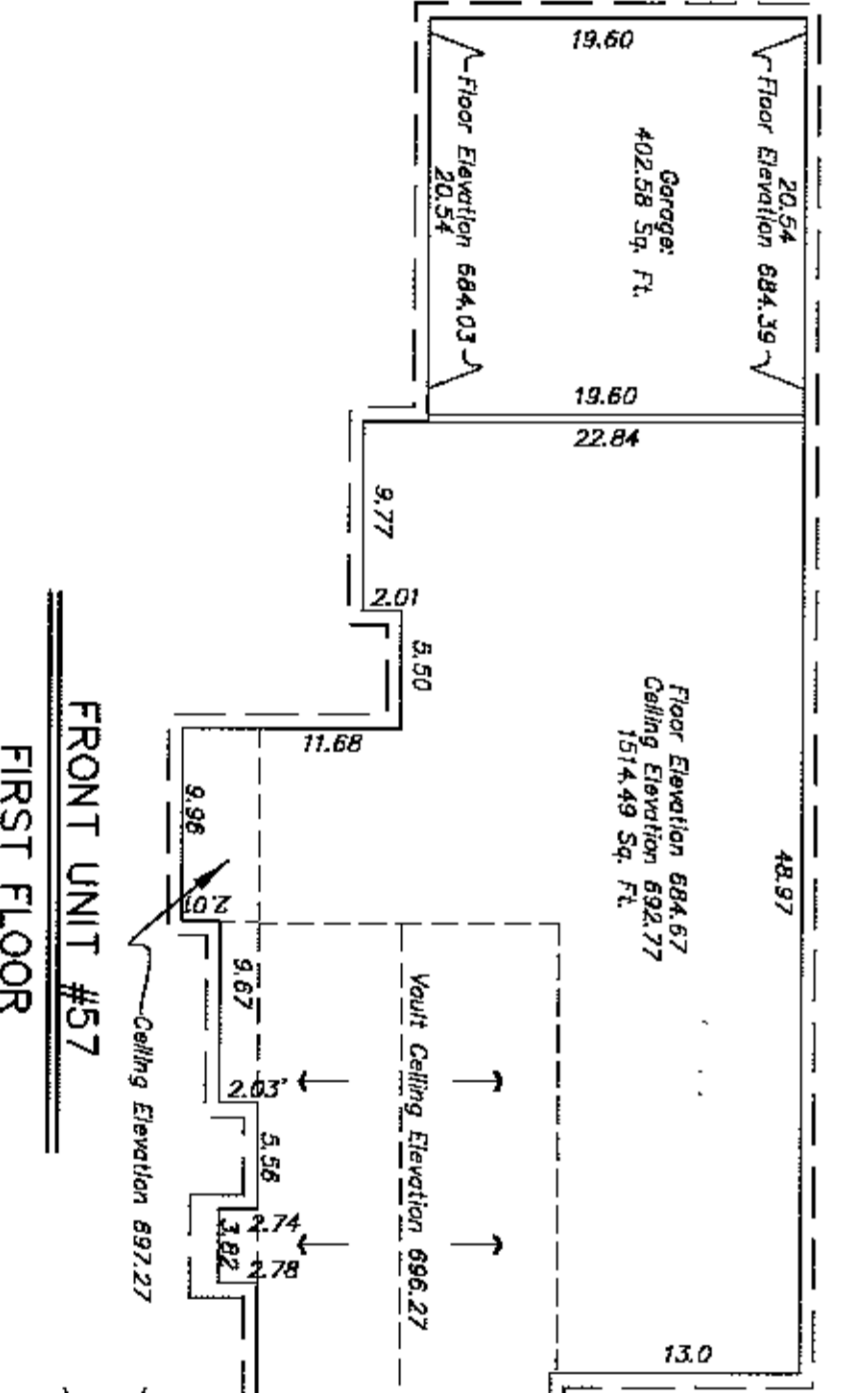
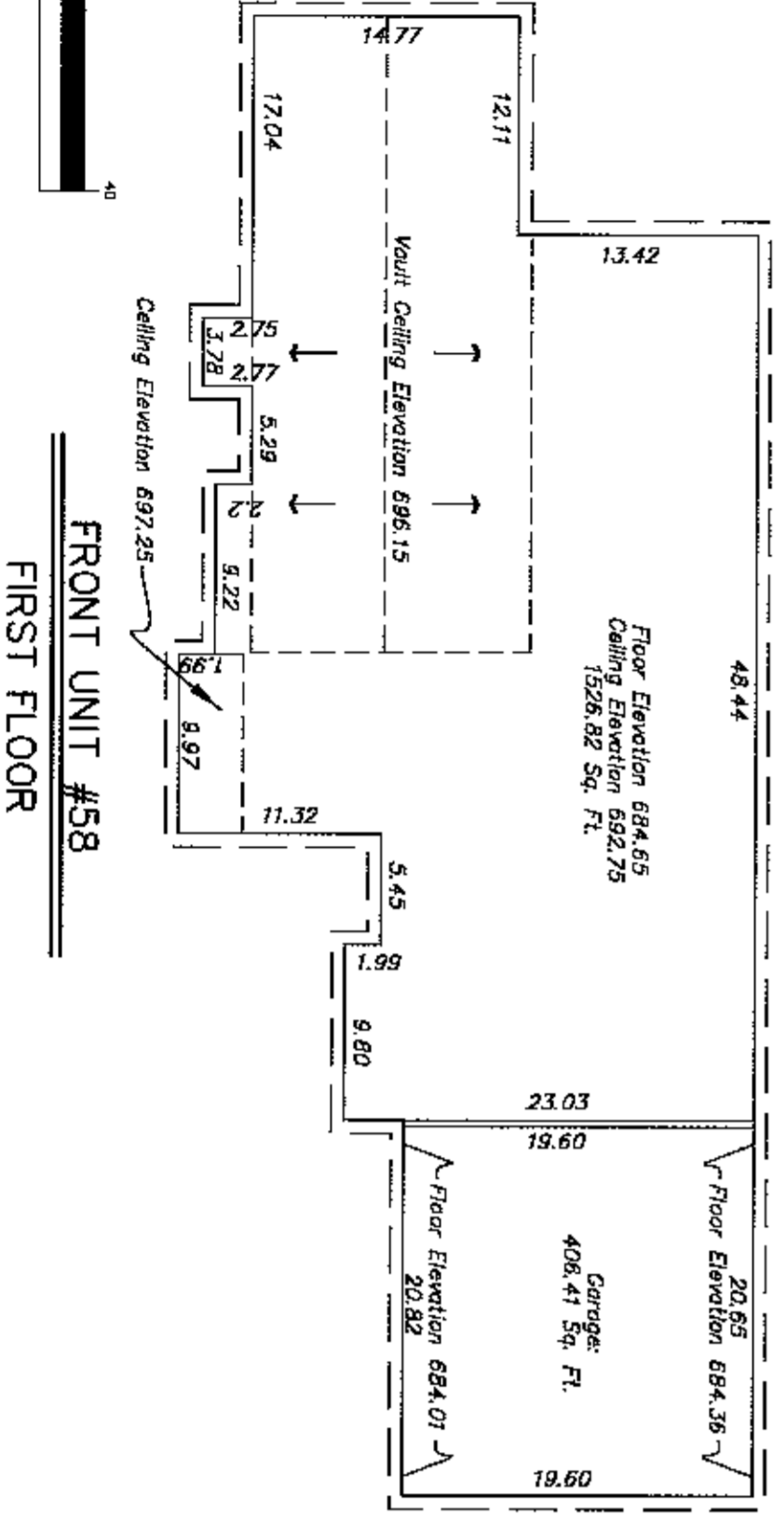
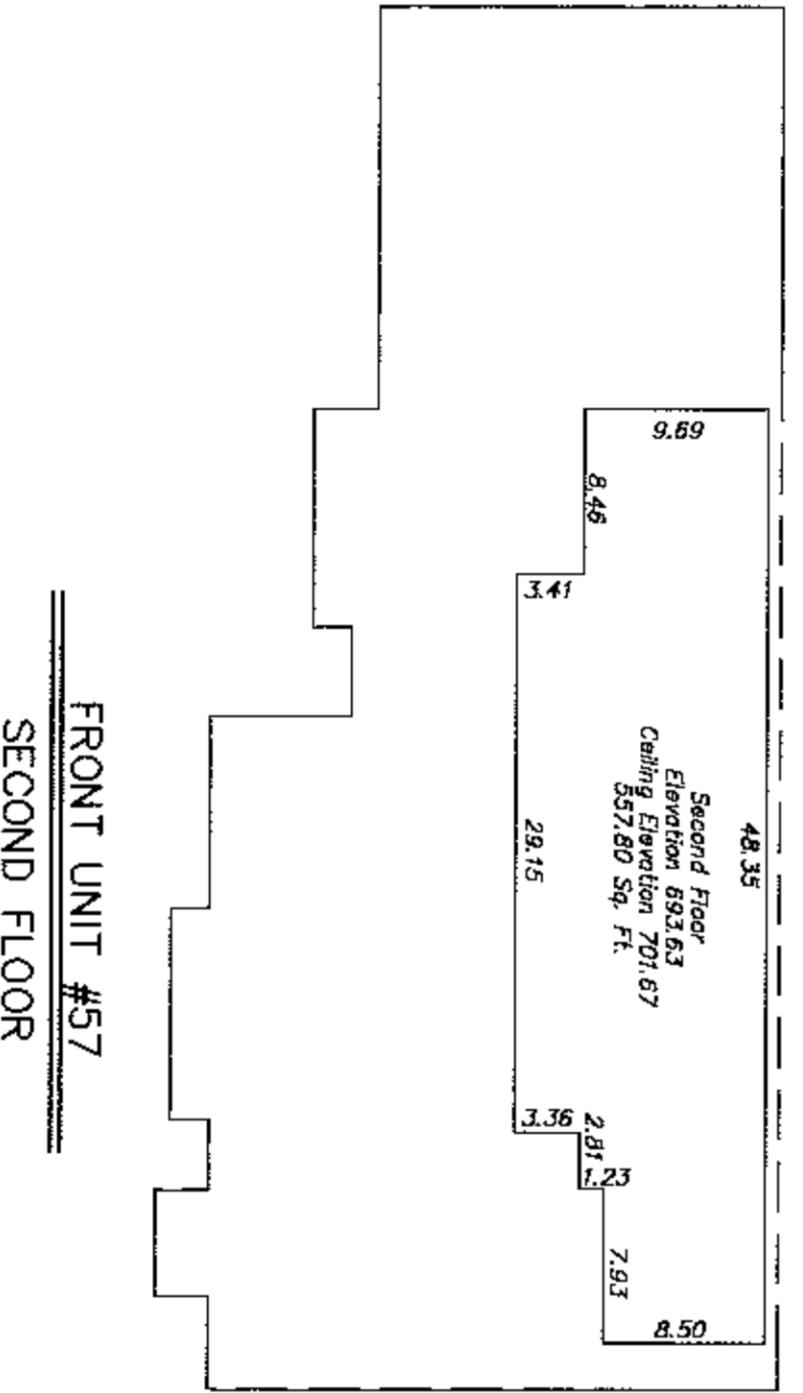
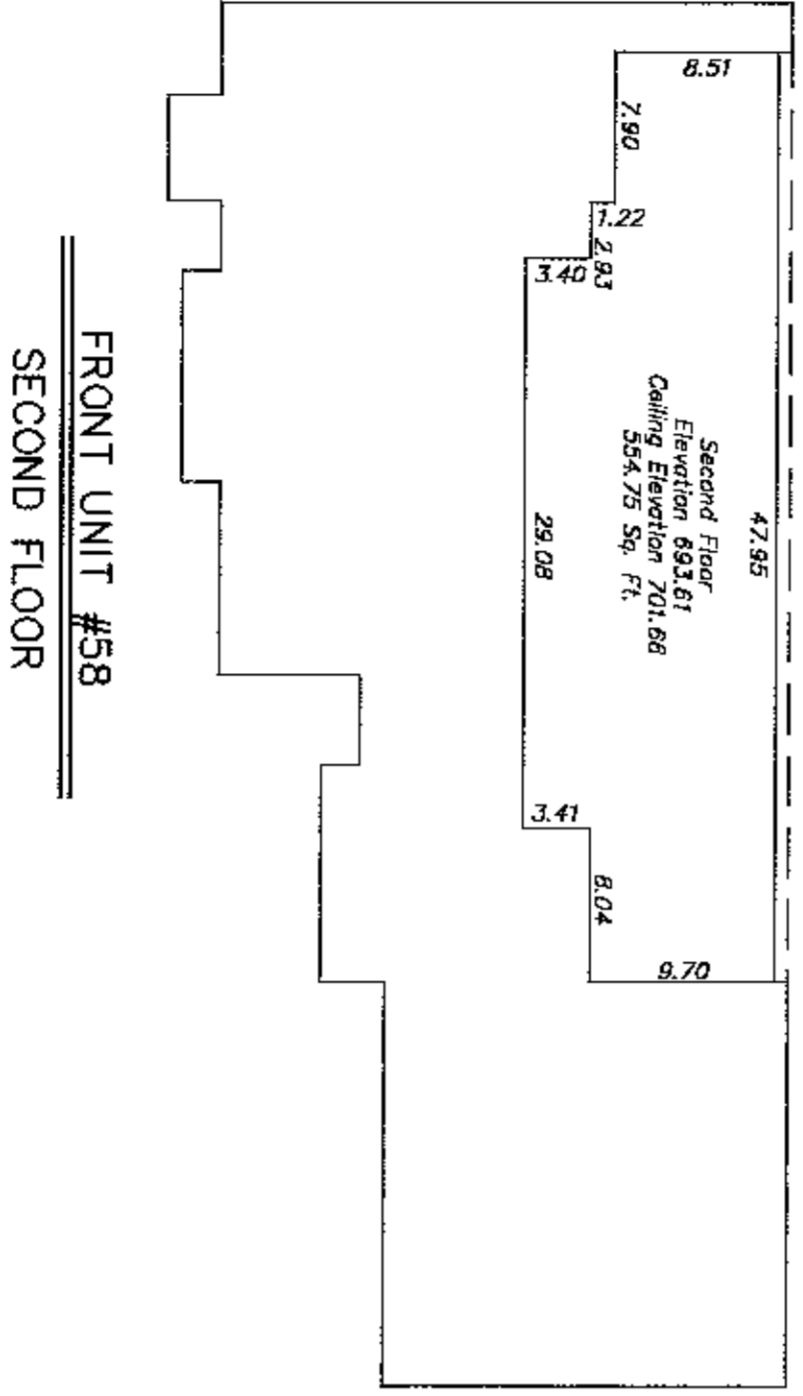
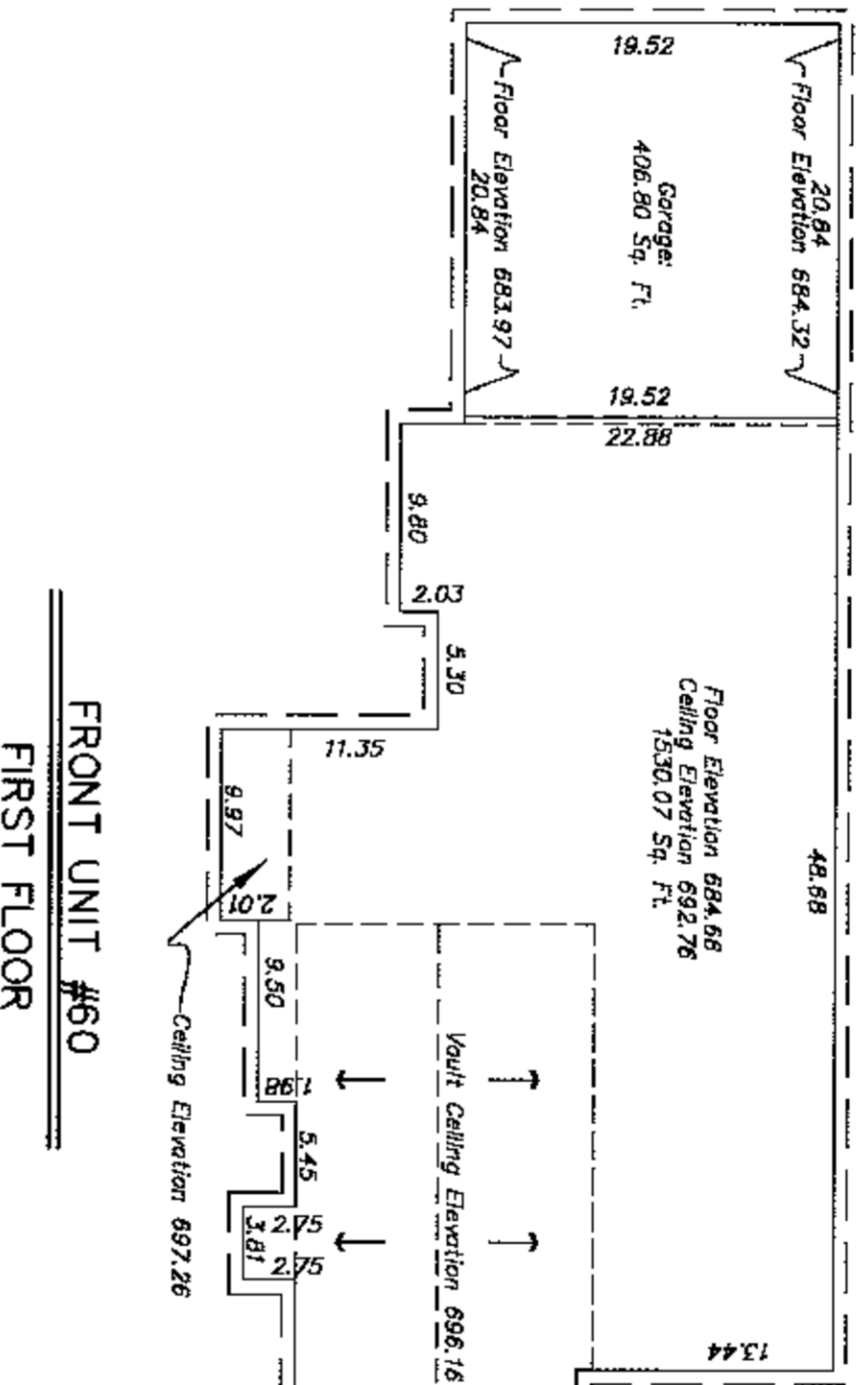
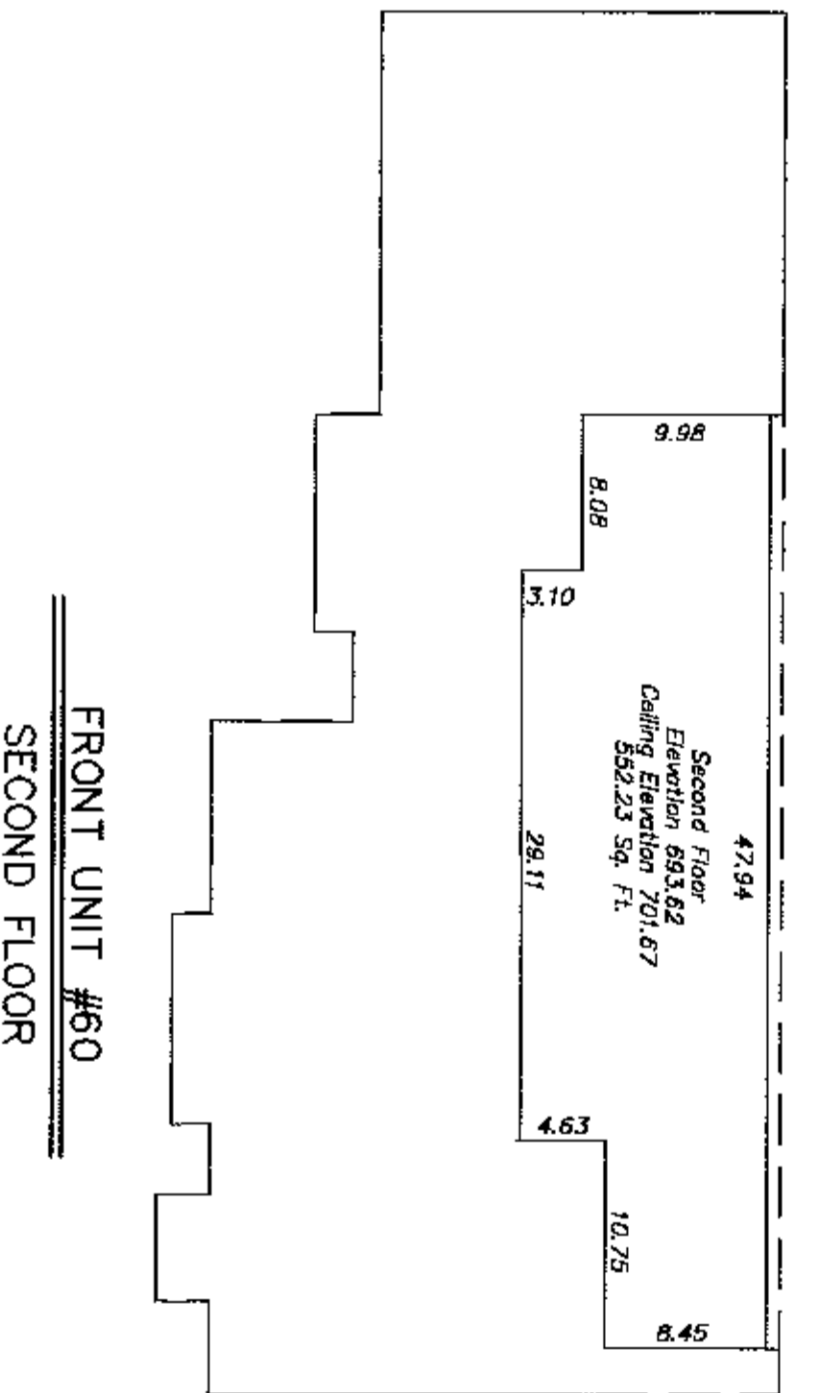
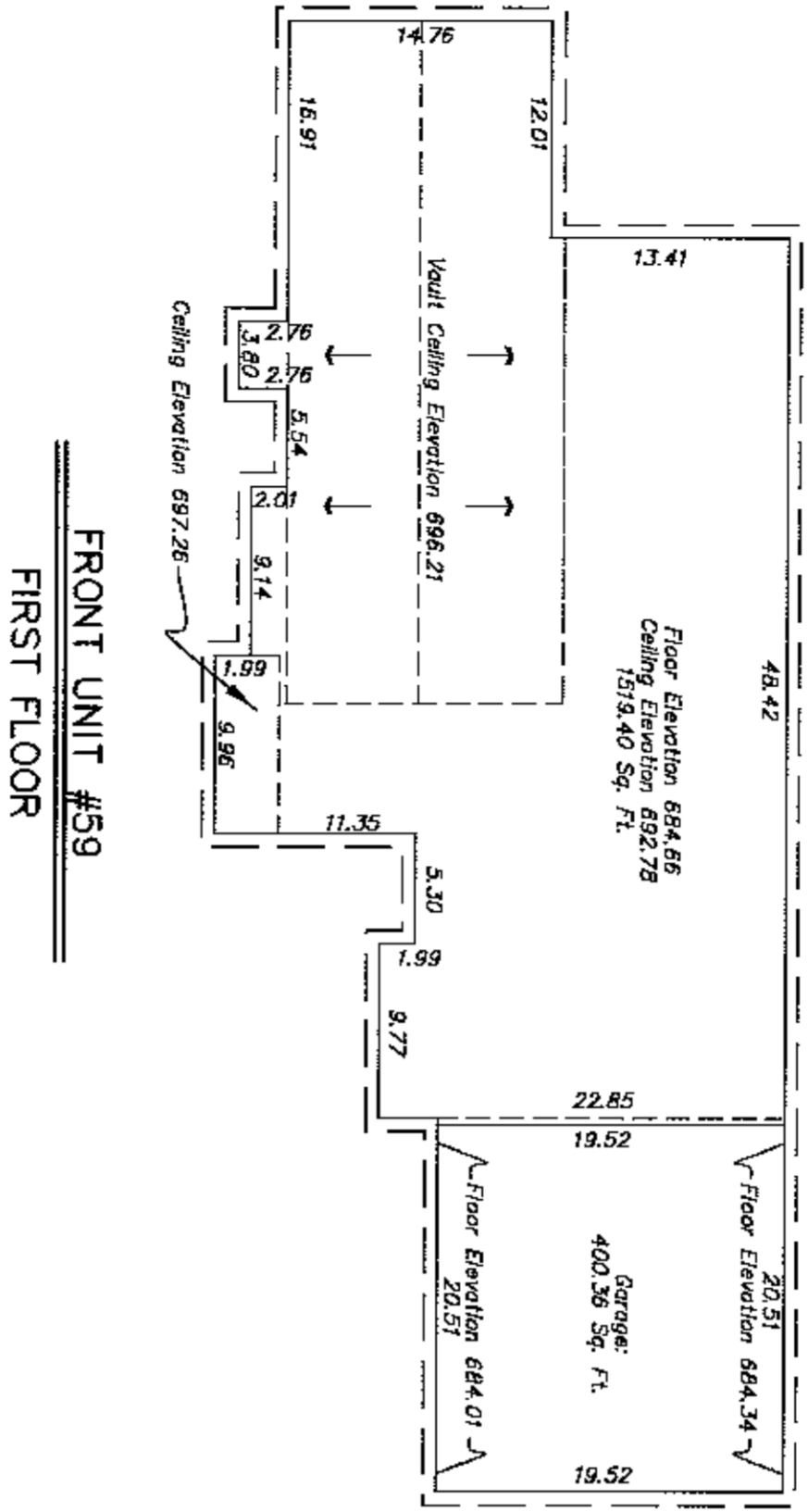
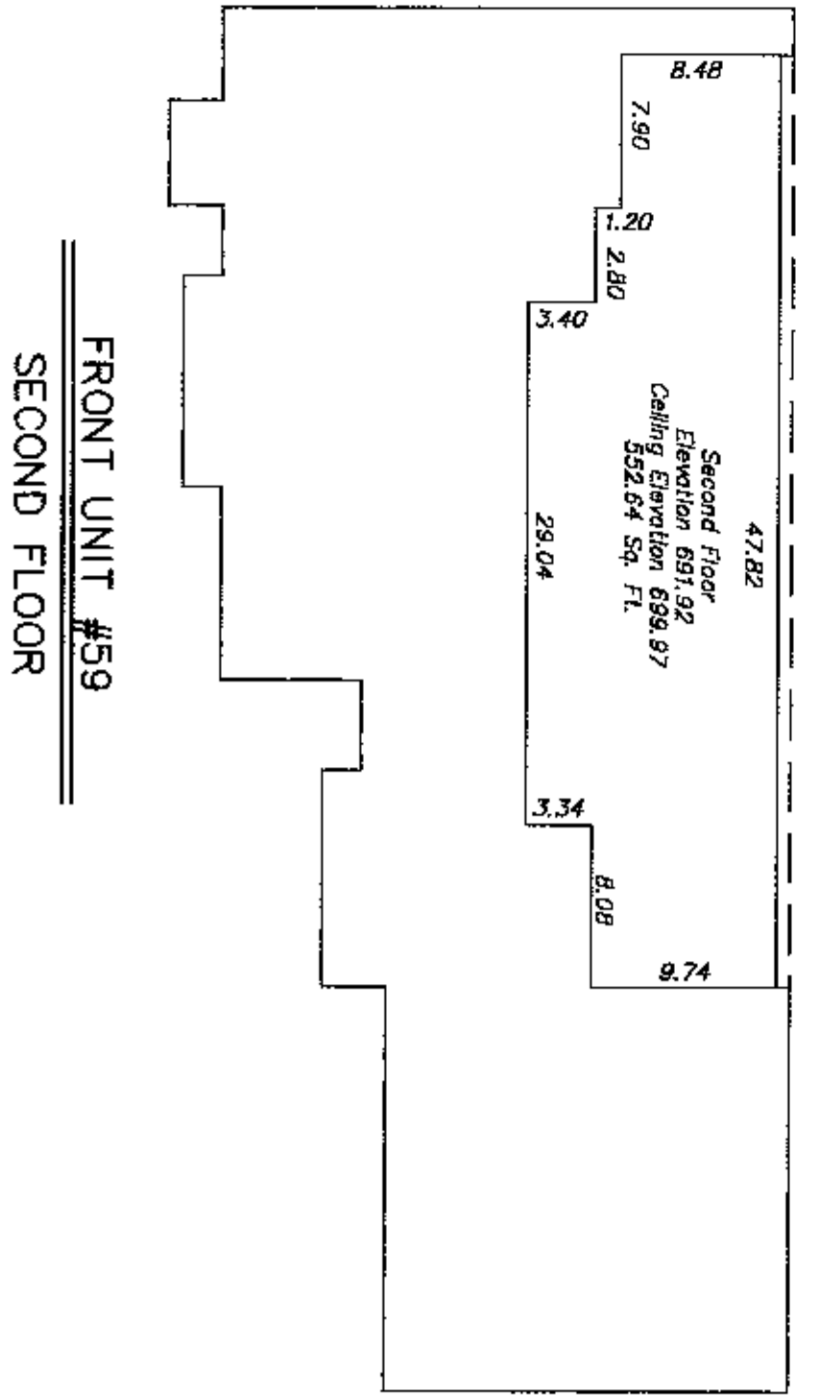
DATE: 10-02-01
DRAWN BY: JCH
CHECKED BY: JCH
SCALE: 1"=60'
SHEET 1 OF 2

84 x 14

84 x 14

84 x 14

84 x 15



91 x 48

84 x 15

LEGEND:
 □ DENOTES LIMITED COMMON SPACE

GENERAL NOTES:

- 1) —○— DENOTES EXISTING IRON PIN W/ CAP UNLESS OTHERWISE NOTED.
- 2) SEE SHEET 2 FOR OUT TO OUT BUILDING DIMENSIONS.
- 3) ALL INTERIOR ANGLES OF CONDOMINIUMS ARE 90 DEGREES OR AS SHOWN.
- 4) EACH CONDOMINIUM UNIT CONSISTS OF SPACE BOUNDED BY A VERTICAL PROJECTION OF THE CONDOMINIUM UNIT BOUNDARY LINES AS SHOWN BY THE HORIZONTAL PLANES AT THE FLOOR AND CEILING ELEVATIONS OR AS SHOWN.

VERIFICATION AND CERTIFICATION

I hereby verify that these plans accurately depict the layout, location, unit numbers, and dimensions of these condominiums as-built.
 I hereby certify that the survey for this plan was made under my supervision and that the angular and linear measurements and the vertical elevations shown hereon are correct to the best of my knowledge and belief.
 J. Paul Clark
 Licensed Professional Land Surveyor, KY #3152

The verification and certification was sworn to before me by John Charles of Birch, Troutwein, & Mims, Inc., on the 3rd day of Oct., 2001.
 My commission expires January 15, 2003.
 Nancy P. Kline

Michael A. Young
 Surveyor

SURVEYOR'S CERTIFICATE

BEFORE AND IN PRESENCE OF ME, the undersigned authority, on this 3rd day of October, 2001, the foregoing and attested to by the surveyor and subscribed to by the party herein named, who acknowledged to me that they executed the same as the act and deed of the party named therein.
 I HEREBY CERTIFY THAT THESE CONDOMINIUM PLANS WERE PREPARED UNDER MY SUPERVISION AND THAT THE ANGULAR AND LINEAR MEASUREMENTS AND BELIEFS AND THE INFORMATION AND KNOWLEDGE OF ME, THE SURVEYOR, ARE CORRECT TO THE BEST OF MY KNOWLEDGE AND BELIEF AND THAT THE CONDOMINIUM PLANS WERE PREPARED AND CHECKED BY ME OR UNDER MY CLOSE PERSONAL SUPERVISION.
 THE REFERENCE HEREON MADE TO THESE PLANS WAS DERIVED FROM AN ESTABLISHED BEARING ALONG THE SOUTH LINE AS SHOWN ON THE ABOVE MENTIONED MINOR PLAN.

Document No.: BAA00110013
 Labeled By: Karen & Karen
 Recorded On: 10/08/2001 01:56:25
 Total Fees: 30.00
 Transfer Tax: 0.00
 County Clerk: David Hobbs - 549 Co KY
 Recording Office: KENTON

BOOK: 81 PAGE: 15
 FILE NO.: 13916

REVISIONS			
NO.	DATE	DESCRIPTION	BY

BIRCH, TRAUTWEIN & MIMS, INCORPORATED
 Consulting Engineers Landscape Architects Planners
 3001 Taylor Springs Drive
 Louisville, Kentucky 40220
 (502)-459-8402 Phone
 (502)-459-8427 Fax

SIGNATURE _____ DATE _____

CONDOMINIUM REGIME
 FOR: THE VILLAGE OF SPRINGMEADOWS
 CONDOMINIUMS
 OWNER & DEVELOPER: MICHAEL A. YOUNG, INC.
 PROPERTY ADDRESS: 9310 NEW LORRAINE ROAD
 Louisville, Kentucky 40241
 (502) 425-6546
 DEED BOOK 6554 PAGE 335 TAX BLOCK 6884 LOT 335

DATE: 10-02-01
 SCALE: 1"=10'
 SHEET: 2 OF 2

84 x 15